



The Gentle Way to Convey®

Worldwide Experts in Cable & Disc Conveying Solutions.

50+

Years in Business

66+

Countries Served

1,000+

Products Moved

32,000+

Conveyors Commissioned

- **Energy-efficient**
- **Clean-in-Place Options**
- **Minimal Footprint**
- **Starts & Stops Under Load**
- **Gentle Handling**
- Less Breakage!
- **Dust-Free Enclosed System**
- No Filters!
- **Leader in Tubular Drag Conveying**



Decades of Global Experience



Coffee



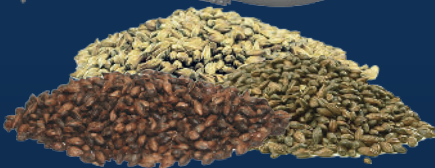
Frozen Food



Nuts



Breakfast Cereal



Breweries Specialty Grains



Snack Foods



Pet Food



Powders



Specialty Seeds & Beans

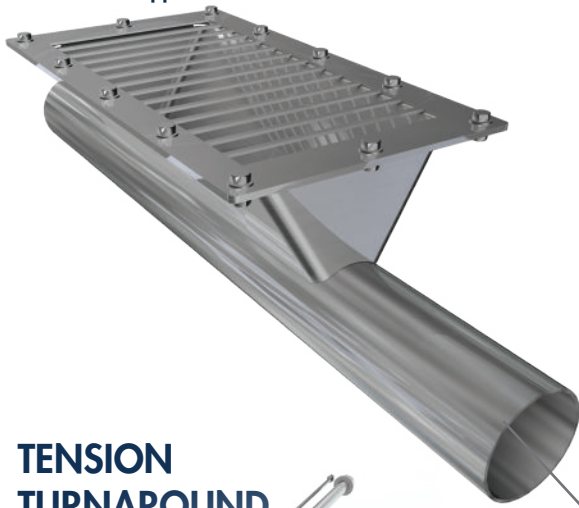


Industrial Materials

Gentle Clean Reliable Conveying

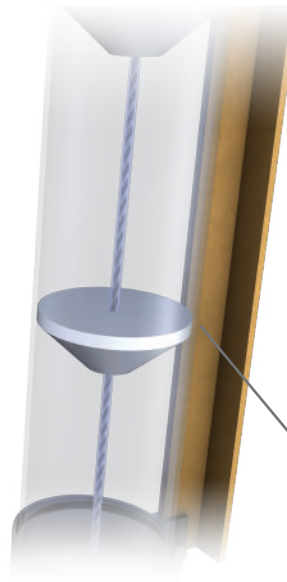
VARIOUS INLET TYPES

To Fit Your Application



INSPECTION TUBE

Transparent View



DIRECTIONAL CHANGE

Sweep

90°

60°

45°

30°



TENSION TURNAROUND UNIT

Self Adjusting

Pneumatic Tensioning Device for Cable Conveyor Tensioning



Horizontal-Vertical

Various Layout D

Feed Multiple Packaging Lines

Horizontal-Vertical-Horizontal 3D

Inline

Loop

All Systems Customized to Your Specifications

TOP ACCESS BRUSH BOX

Automatic Disc & Cable Cleaning



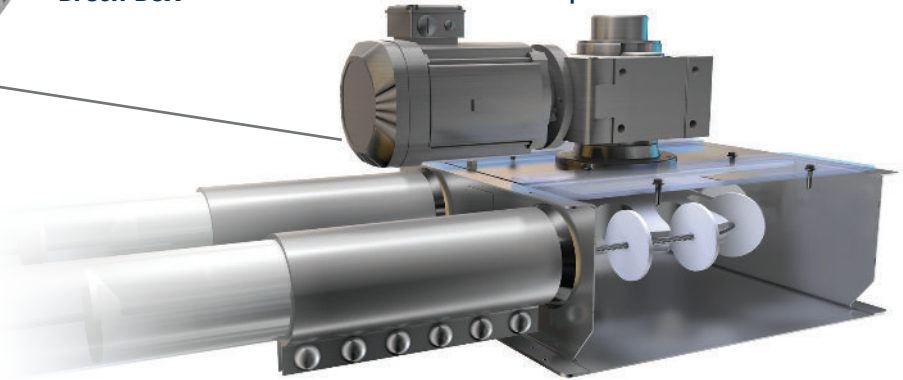
ROTARY DISCHARGE

Multiple Discharge Options (as needed) • Variable Position Discharge



DRIVE UNIT

Compact and Low HP

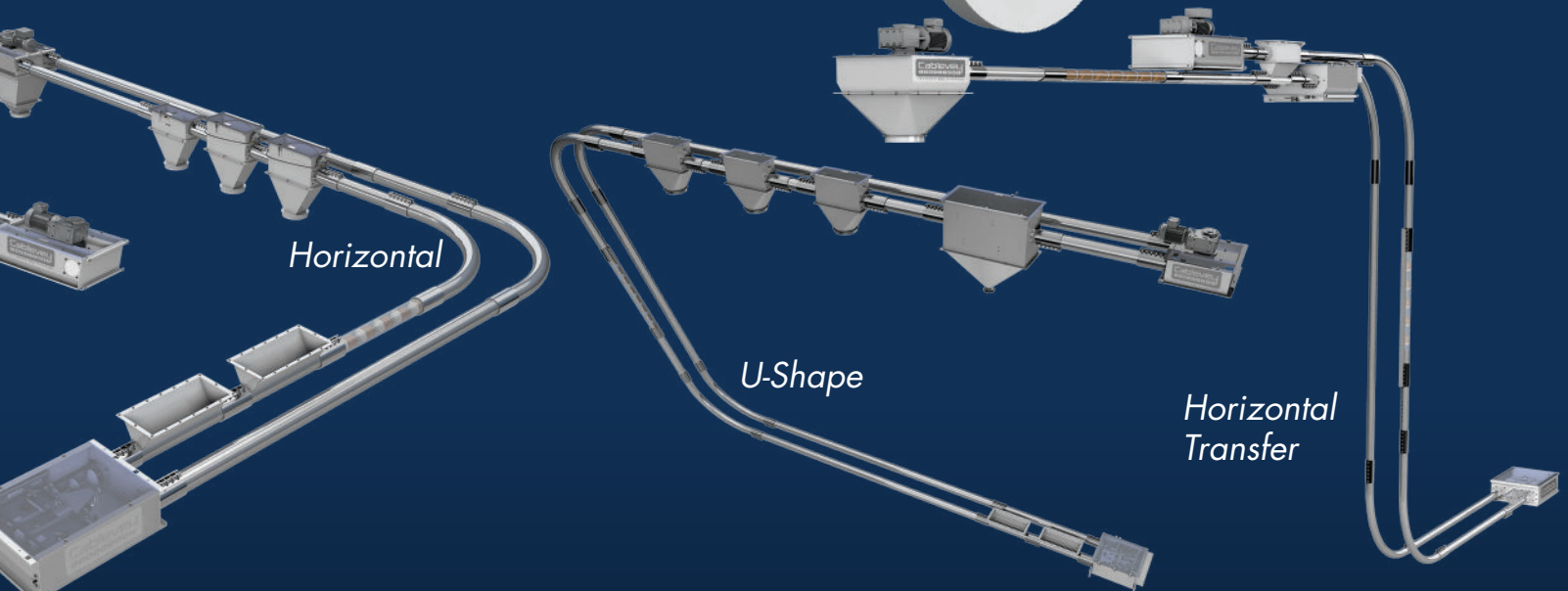


THE HEART OF THE SYSTEM - **CABLE & DISCS**

1-Piece, 2-Piece, Coated or Uncoated • Ultra-Flexible
• High-Tensile Strength • Durable Stainless Steel Cable.

ical-Horizontal

Designs Available



Slow Speeds (VFD controlled) Fight Degradation and Separation!

8" Systems

High-Volume Cable Conveyors

8" (203.2mm) diameter high-volume cable conveyors can be customized to move just about anything. Examples include pet food, powders, in-shell walnuts, peanuts and puffed rice breakfast cereal. These systems are designed to handle high volume and can operate on multiple planes.

With our 8" tube conveyor systems, you can expect:

- Gentle material handling
- Enclosed dust-free environment
- Easy maintenance

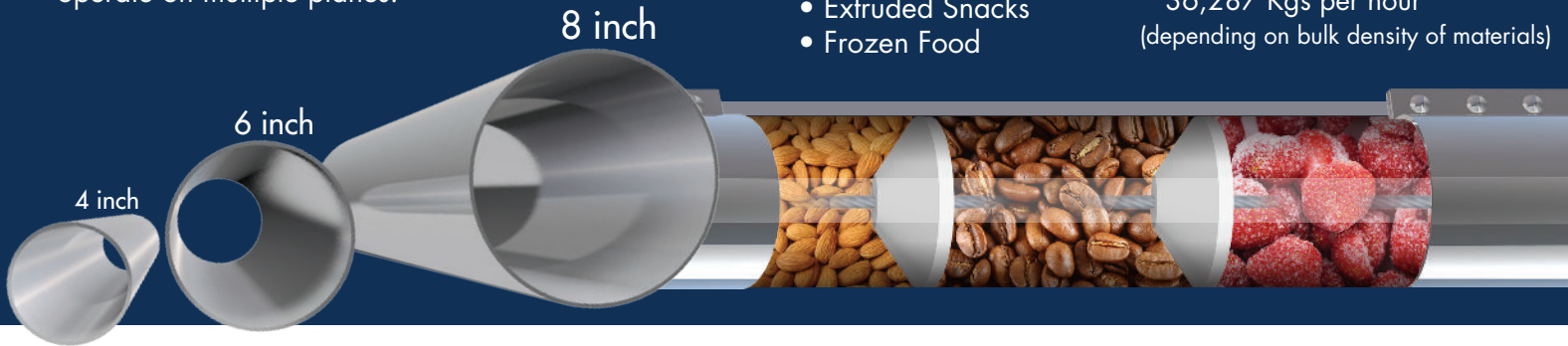
8" Cable Conveyors

Typically used to convey:

- Pet Food
- Nuts
- Coffee
- Extruded Snacks
- Frozen Food

System Capacity:

- 8" (203.2mm) tube diameter
- Moves up to 2,000 Ft³ (56.6 M³)/hr.
- Moves up to 80,000 pounds/hr. 36,287 Kgs per hour (depending on bulk density of materials)



Cablevey tubular drag conveyor systems are designed to move materials in a safe, clean, and efficient manner. Our cable and tube conveyors are ideal for moving materials and product blends in a dust and contamination-free environment. Our systems are ideal for conveying delicate, fragile, and specialty bulk materials through all phases of production and processes through to packaging.

Recently, in addition to our food-grade stainless steel systems, Cablevey has released a conveyor more suitable for materials that contain natural oils. Certain natural oils like those produced by peanuts and tree nuts might affect stainless steel adversely, and therefore some materials are better conveyed through our exclusive plastic tubing.

Our Clearvey™ Systems allow materials to move through our tubing with no adverse effects. These systems are designed with the same clean, efficient and gentle handling as our stainless-steel systems. Cablevey's Clearvey™ Systems have proven to accommodate a wide range of materials beyond peanuts and tree nuts, and the clear tubing allows the user to view the material moving through the tube ensuring proper conveying. The Clearvey™ system offers both wet and dry tube conveyor cleaning options.

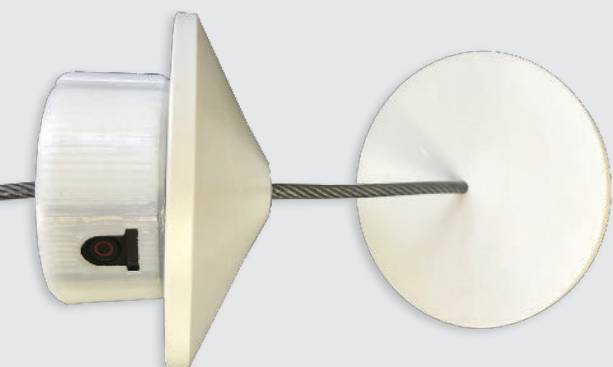
Every system is custom-specified through our engineering department. This ensures all systems are optimized to client needs. Design considerations typically include how much material can be moved without breakage...and how far, how high, and how fast you need to move materials. Bottom line: our engineers and library of system components can solve most material movement needs with cable, disc, and tube conveyor systems.



Inspection Video Camera & Conveyor Monitoring System

Install a conveyor monitoring system camera to ensure proper installation and maintenance of your Cablevey conveyor. Our cameras are diagnostic tools that run through tubular drag systems to ensure that conveyors are installed correctly.

All cameras are equipped with removable micro SD cards and self-contained LED lighting units.



Enclosed Tubular Drag Cable and Disc Conveyors to Gently Convey Your Friable Materials

Compare conveyor systems below to determine which is the right conveyor system for your needs.

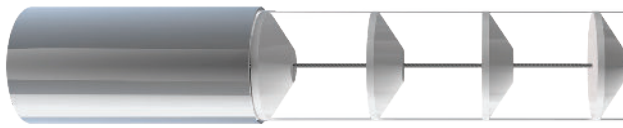
In comparison to other modes of conveyance, Cablevey stands out for our energy-efficiency. This chart below compares our most commonly used motor, **5.4 HP**... compared to other common means of conveying – like chain conveyors – using 2.5x more energy, to the use of pneumatic conveyors often using **10x** more power.

Energy Efficient <i>Electric Motor Operating Costs (Cablevey uses 1 to 7.5 HP Drive Units)</i>			
Horsepower/ Kilowatts ¹	Full Load AMP	NEMA Efficiency	Annual Cost*
1	1.6	85.50%	\$419
5.4	7.2	89.50%	\$2,160
7.5	9.5	91.70%	\$2,928
12	16	91.70%	\$4,684
25	31.7	91.70%	\$9,758
50	63.4	91.70%	\$19,517

Based on 460V continuous run @ \$.12 per kilowatt hour

8000 Series - Maximum 2,000 Ft³/Hour (56.6 M³)

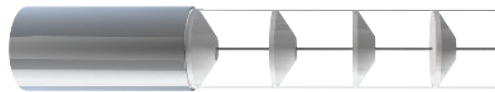
8"-203.2mm



Cable Speed		Flow Rate			
Ft/Minute	Meter/Minute	Ft ³ /Hour	Lbs./Hour*	m ³ /Hour	Kg./Hour
40	12	571	22,840	16	10,360
60	18	857	34,280	24	15,549
80	24	1,143	45,720	32	20,738
100	30	1,429	57,160	40	25,927
120	36	1,714	68,560	48	31,098
140	43	2,000	80,000	54	36,287

6000 Series - Maximum 1,240 Ft³/Hour (35.4 M³)

6"-150mm



Cable Speed		Flow Rate			
Ft/Minute	Meter/Minute	Ft ³ /Hour	Lbs./Hour*	m ³ /Hour	Kg./Hour
40	12	350	14,120	10	6,400
60	18	530	21,180	15	9,610
80	24	710	28,240	20	12,810
100	30	880	35,300	25	16,010
120	37	1,060	42,360	30	19,210
140	43	1,240	49,420	35	22,420

4000 Series - Maximum 525 Ft³/Hour (14.87 M³)

4"-100mm



Cable Speed		Flow Rate			
Ft/Minute	Meter/Minute	Ft ³ /Hour	Lbs./Hour*	m ³ /Hour	Kg./Hour
40	12.19	150	6,000	4.25	2,722
60	18.29	225	9,000	6.37	4,082
80	24.38	300	12,000	8.50	5,442
100	30.48	375	15,000	10.62	6,803
120	36.57	450	18,000	12.74	8,163
140	43	525	21,000	14.87	9,524

2000 Series - Maximum 75 Ft³/hour (2.12 M³)

2"-50mm



Cable Speed		Flow Rate			
Ft/Minute	Meter/Minute	Ft ³ /Hour	Lbs./Hour*	m ³ /Hour	Kg./Hour
40	12.19	30	1,200	.85	544
60	18.29	45	1,800	1.27	816
80	24.38	60	2,400	1.70	1,088
100	30.48	75	3,000	2.12	1,361

Based on 40 Lbs per Cubic Foot (640 Kg. per Cubic Meter)



Cablevey Conveyors

P O Box 148, 2397 Highway 23

Oskaloosa, Iowa 52577 U.S.A.

1 (800) 247-3344

Tel: +1 (641) 673-8451

Fax: +1 (641) 673-7419

Email: info@cablevey.com

www.cablevey.com



The Gentle Way to Convey®

© Cablevey is a registered trademark of Intraco, Inc. 09/2022

Cable Conveyor Cleaning Options

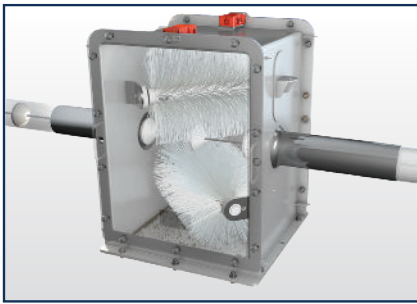
Cablevey offers both wet and dry tube conveyor cleaning options. Our tube conveyors are designed for food-grade applications, eliminating places for fines to accumulate.

Cablevey Conveyors are equipped with:

- Solid Discs (no screws or bolts)
- "Jacketed" Cables (nylon casings)
- Attached Discs (to cable)
- Stainless Steel Connectors
- Removable Equipment (for easy cleaning)

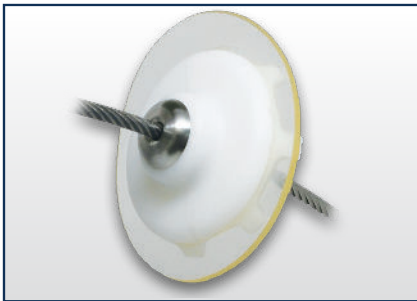
Dry Cleaning

This internal tube conveyors cleaning option is available on our 4", 6" and 8" diameter systems and involves several equipment items including:



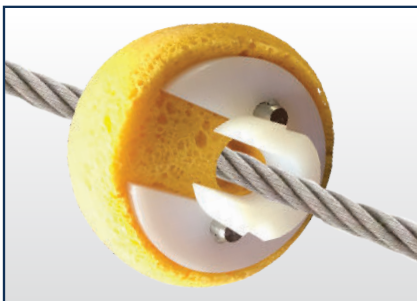
Brush Box

A line insert that mechanically brushes accumulating fines off discs.



Wiper Disc

Urethane Wiper Disc: a disc insert that wipes away accumulating fines and particles

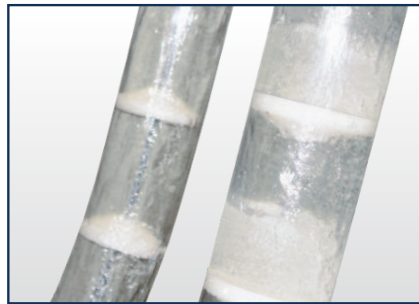


Sponge Disc

Sponge Disc & Sanitizing Cleaner: a disposable sponge disc that is run through the system with an applied cleaning agent.

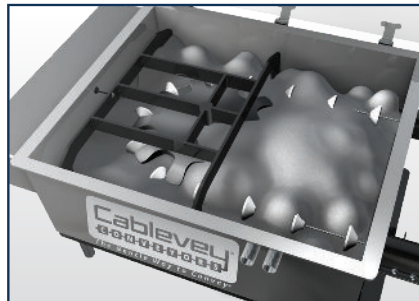
Wet Cleaning

This option is available on our 4", 6" and 8" diameter systems. It's a multi-step internal tube conveyor cleaning process that's fast and easy:



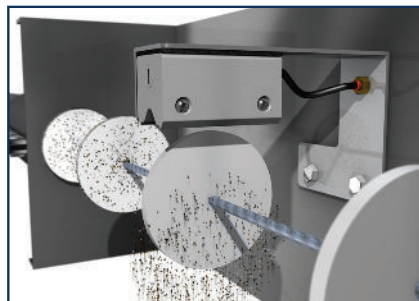
Water Rinse

After the material has passed out of the system water can be introduced to rinse the inside of the tube, disc and cable.



Foam Agent

Foam cleaning agent is introduced into the tube environment to cleanse all internal parts of the system.



Air Knife for Drying

A strategically located line insert that uses compressed air to blow accumulating fines off discs.

"We offer a full line of cable and tube conveyor cleaning mechanisms"