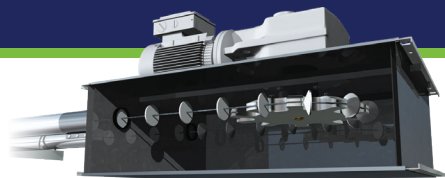


Cablevey Conveyors Key Components

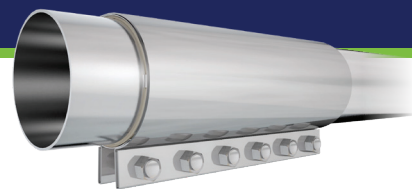


1 Drive Unit

The cable is pulled through the drive unit by an electric gearmotor mounted to a stainless steel frame. The cable can enter and exit through either tube port as required for your layout.



The Gentle Way to Convey®

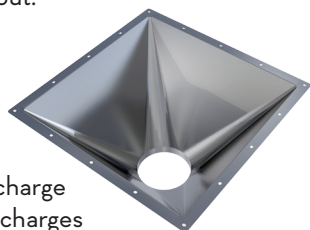


5 Compression Coupler

The coupler's food grade rubber gasket ensures a good seal against air, water and dust. The coupler holds the tubes together in perfect alignment to provide the discs a smooth path.

2 Funnel

Funnels are used to discharge material from rotary discharges and/or cleanouts. Funnel outlets are available in a wide variety of sizes and connection types to fit your needs.



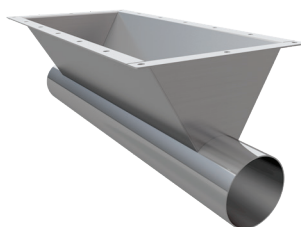
3 Inspection Section

The cable is pulled through the drive unit by an electric gear motor mounted to a stainless steel frame. The cable can enter and exit through either tube port as required for your layout.



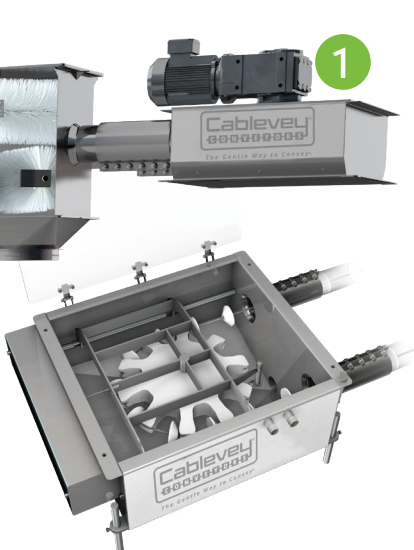
6 Inlet

Inlets are available in a wide variety of lengths to accommodate various needs. The sides of the inlets are available in different slopes to accommodate different material flow properties. Multiple inlets may be used if desired.



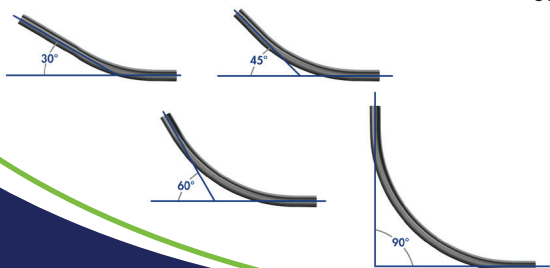
7 Turnaround

The turnaround contains a sprocket that facilitates reversing cable direction from the return side of the system to the product conveying side. The sprocket is mounted on a mechanism designed to provide proper cable tension.



4 Sweep

Sweeps change travel to any desired direction. Sweeps are available in many angles from 0-90 degrees and in several different radius dimensions to fit restricted spaces.



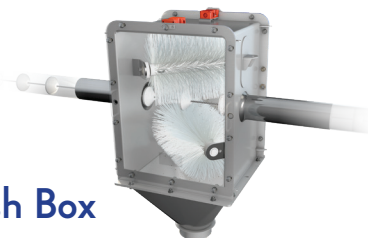
8 Discharge

The discharge has the ability to be open or closed allowing materials either to pass through or exit the conveyor at that point.



9 Brush Box

A Brush Box is a housing that the cable and discs pass through. The Brush Box contains two roller brushes mounted above and below the cable and discs. As the cable moves through the discs turn the brushes removing any clinging particles into a waste chute for disposal.



cablevey.com

+1.641.673.8451

info@cablevey.com



Cablevey Conveyors | 2397 Highway 23, PO Box 148, Oskaloosa, Iowa 52577 USA